

Dulcimer Chords for Contra Dance Music

Chord Finder

(To use: play pattern with open dot at indicated bridge position to produce chord indicated)

TREBLE BRIDGE

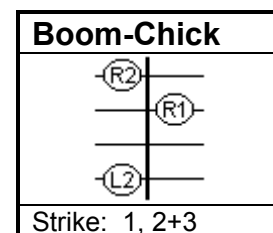
BASS BRIDGE

		pattern 1	pattern 2	pattern 3	pattern 1	pattern 2	pattern 3		
			G			C			
C	F	Dm	F		Gm	Bb		Bb	
		C	Em	Am	F	Am	Dm		
			D	G		G	C		
G	C	Am	C		Dm	F		F	
		G	Bm	Em	C	Em	Am		
			A	D		D	G		
D	G	Em	G		Am	C		C	
		D	F#m	Bm	G	Bm	Em		
			E	A		A	D		
A	D	Bm	D		Em	G		G	
		A	C#m	F#m	D	F#m	Bm		
			B	E		E	A		
E	A							D	
		(1st inversion)		(2nd inversion)	(1st inversion)		(2nd inversion)		

Standard I-IV-V chord progressions in different keys: (with accompanying minor chords)

key of:	I	IV	V	vi	ii	iii
D	D	G	A	Bm	Em	F#m
G	G	C	D	Em	Am	Bm
A	A	D	E	F#m	Bm	C#m
C	C	F	G	Am	Dm	Em
F	F	Bb	C	Dm	Gm	Am

Striking Chords:



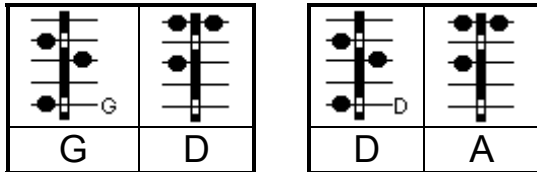
emphasize the CHICK - "snap" it!

Dulcimer Chords for Contra Dance Music

Using Chords in Tunes

Reel de Montreal

//: G G G G D D G G G G G G D D G G ://
 //: D D D D A A D D D D D D A A D D ://



Reel de Montreal

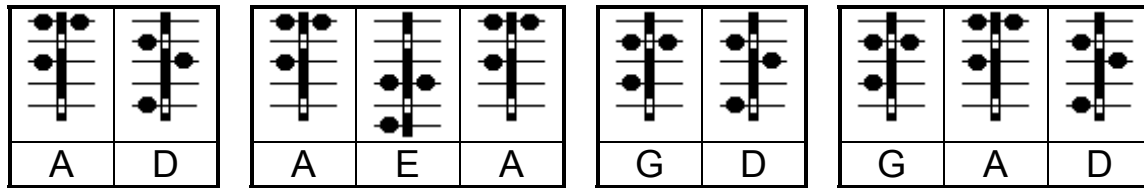
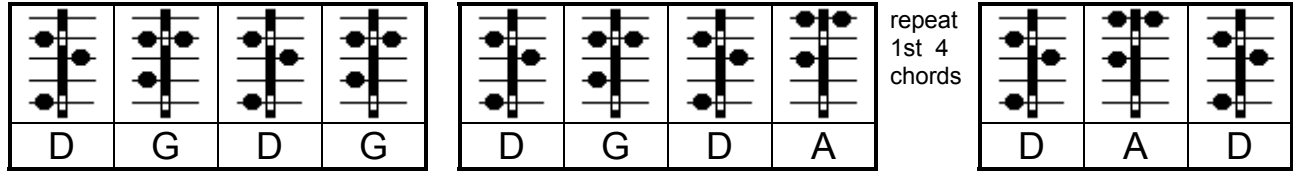
The musical notation for the Reel de Montreal tune is as follows:

- Staff 1: G D
- Staff 2: G D
- Staff 3: G D A
- Staff 4: D A
- Staff 5: D

Dulcimer Chords for Contra Dance Music

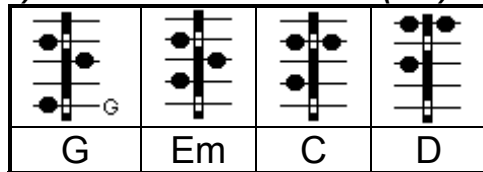
Fisher's Hornpipe

//: D G D G D G D A D G D G D A D D ://
 //: A A D D A A E A G G D D G A D D ://



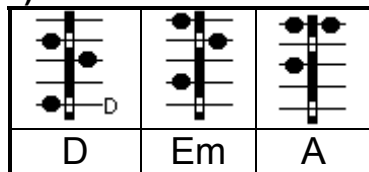
Other Common Progressions

1) Addition of a minor vi (6th) chord



Lady of the Lake (G) G G Em Em C C D D G G Em Em C C D G
 Colored Aristocracy (G) G G G G Em..Em C C G G A A D D
 Flowers of Edinburgh (G)
 B part: G G D D C C Em Em G G C C G D G G
 Temperance Reel (G) //: G G G G Em Em D D G G G G Em Em D G ://
 //: Em..Em G G G G Em..Em EmEm D G ://

2) Addition of a minor ii (2nd) chord

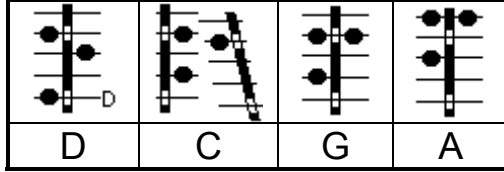


Swinging on a Gate (G) G G AmAm G G D D G G AmAm AmAm D G
 St. Anne's Reel B part (D) D D G Em A A D D D D G Em A A D D
 Galopede (G) G D G G AmAm D D G D G G Am D G G

Dulcimer Chords for Contra Dance Music

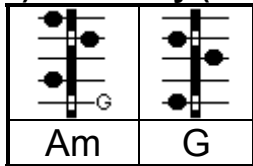
Big John McNeil (A) A A A A A A Bm E A A A A A D E A
 Mason's Apron (A) A A A A BmBmBmBm A A A A D Bm E A

3) Modal 7th



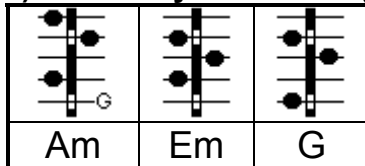
Over the Waterfall (D) D A D D D A D D D A D D C C G G
 LaBastrange B part (D) D D C C D D A D D D C C D D A D
 Cuckoo's Nest (D) D D D D C C C C D D D G D A D D
 Top of the Hill (A) A A A A G G G G A A A A E E A A

4) Minor key (simple)



Growling Old Man and Grumbling
 Old Woman (Am) AmAm G G AmAm G Am AmAm G G AmAm G Am
 Swallowtail Reel (Am) AmAmAmAm G G G G AmAmAmAm G G Am Am
 Old Grey Cat (Em) EmEmEmEm D D D D EmEmEmEm D B Em Em

5) Minor key with i & v (1st & 5th minor) chords



Tenpenny Bit (Am) AmAmEmEm AmAm G G AmAmEmEm G G Am Am
 Swallowtail Jig B part (Em) EmEmEmEm EmEmEm D EmEmEmEm Bm D Em Em
 Rory O'More B part (F#m) F#mF#mBmF#m F#mF#m E E ...
 Star of Munster (Am) Am G Am Em AmAmAm G Am G Am Em AmAmEmAm

Dulcimer Chords for Contra Dance Music

6) Ascending progressions

D	Bm	Em	G	A
G	Em	Am	C	D

Paddy on the Railroad (D) D D D D D BmEm A D D D D D D A D D
 Spootiskerry (G) G G G D G Em C D G G G G C Am D G

7) Descending progressions

D	Em	Bm	F#m	G	A

Top of Cork Road B part (D) D D A A BmBmF#mF#m G G D D G A D D
 Bouchard's Hornpipe (D) //: D G A D EmEmA A G G D D G A D D ://
 //: D D EmEm BmBmF#mF#m G Em D D G A D D ://

Other Suggestions & Ideas:

- ◆ look at all the chords in a song, then map out a chord strategy - don't panic
- ◆ play "on-the beat", not after it!
- ◆ 2 note pseudo-chords using flams (often for B chord)
- ◆ play dragged 1st and 3rd notes together for emphasis (Joys of Quebec)

Recommended references:

- The Square Dance Chord Book and Tune Locator (\$12.00)
 by Jack Sloanaker and Tony Parkes
 F&W Records, Box 12, Plymouth, VT 05056
- The Hammered Dulcimer A-Chording to Lucille Reilly (\$27.95)
 Shadrach Productions
 P.O. Box 49
 Basking Ridge, NJ 07920